

CCAS0420-1080410FO

## Signature

Signature 550mm counter top basin, 8"8"

### STYLE SEGMENT

- Modern

### KEY SPECIFICATIONS

- Installation Type: Countertop
- Product Dimensions: 550 x 430 x 125
- Material: Vitreous China
- Color: White Heat II
- Overflow Hole: With
- Faucet Ledge: Yes
- Included Components: Semi Fixing kit need to put in package



### SHIPPING WEIGHT

- Net Weight: 14
- Gross Weight: 15

### KEY TECHNOLOGIES AND FEATURES

#### HYGIENE

- Complies with American Standard Quality Standards

#### COMFORT

- Complies with American Standard Quality Standards

#### CONVENIENCE

- Complies with American Standard Quality Standards

#### DURABILITY

- Complies with American Standard Quality Standards

#### SUSTAINABILITY

- Complies with American Standard Quality Standards

#### SAFETY

- Complies with American Standard Quality Standards

#### OTHERS

- NIL

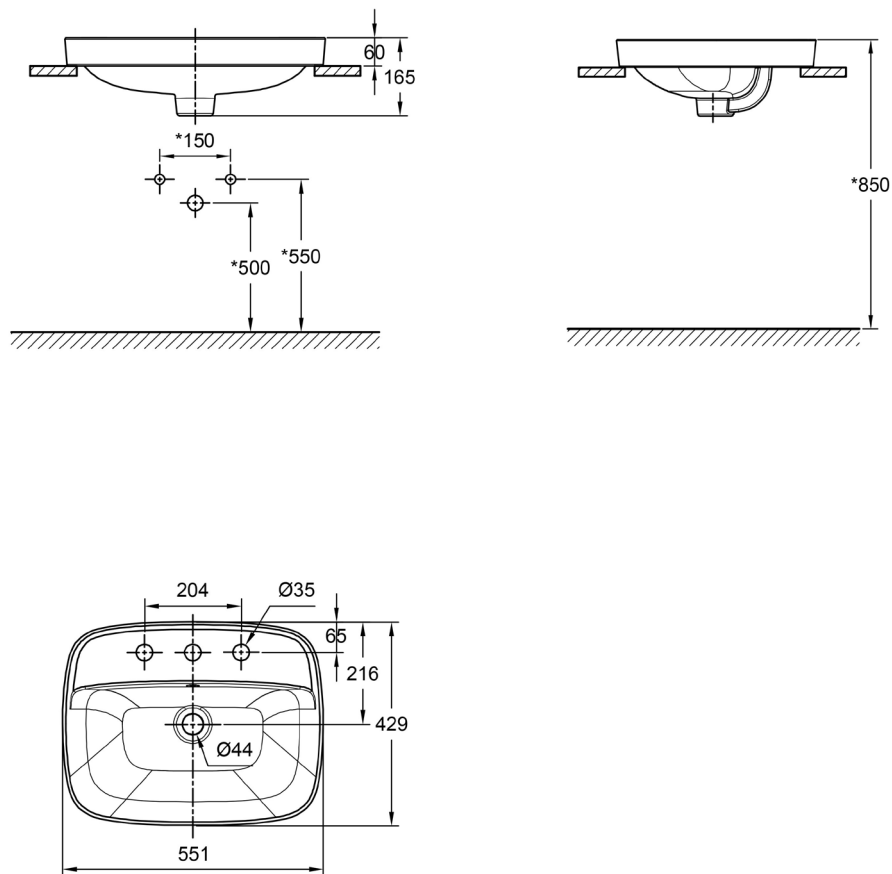
### STANDARDS AND CERTIFICATIONS

- GB/T 6952-2015

CCAS0420-1080410FO

Signature

Signature 550mm counter top basin, 8"8"



CCAS0420-1080410FO

## Signature

Signature 550mm counter top basin, 8"8"

<b>Item</b>	Description	Signature 550mm counter top basin, 8"
<b>Installations</b>	Type	Countertop
<b>Dimensions</b>	Product (mm)	550 x 430 x 125
<b>Material &amp; Color</b>	Material	Vitreous China
	Color	White Heat II
<b>Features</b>	Overflow Hole	With
	Faucet Ledge	Yes
<b>Components</b>	Included	Semi Fixing kit need to put in package
<b>Shipping</b>	Net Weight (kg)	14
	Gross Weight (kg)	15
	Product Weight (kg)	14
	Dimensions (mm)	585 x 460 x 205